



**Master  
Coat®**

**PRODUCT CATALOGUE**

AZTEC-INTERNATIONAL.EU



**Aztec**  
International



# Table of Contents

About us .....	5
Master Coat® .....	7
Carbon Steel fasteners .....	9
Stainless Steel fasteners .....	14
Bimetal fasteners .....	17
Master Tools .....	19
Saddle Washers .....	21
Rivets .....	24
Rubber Plug .....	26
Master Seal® - bonded washer .....	28
Master Flash® .....	30





AZTEC-INTERNATIONAL.EU

## About us

Aztec International S.A. is recognised as a market leader in the field of industrial powder painting in Europe. It is a producer of Saddle Washers, as well as an exclusive distributor of products manufactured within Aztec Group, like Master Seal Bonded Washers and Master Flash high quality Flashings.

The company's product portfolio also contains anchors, rivets and screws. Our screws programme includes carbon steel zinc plated self-drilling and self-tapping screws, stainless steel screws and bimetal self-drilling screws for various applications.

Most of these products we offer with optional powder painting. Whether a façade, roof, or ceiling, Aztec International S.A. can match any fixing to the colour of the given surface in a nearly identical shade, including levels of gloss and paint structure.

Our own unique and continuously developed technology called Master Coat®, as well as by Aztec designed and manufactured high capacity painting lines, allow us to provide the highest quality of powder painting applications on most fastener types and various protective surfaces. Different types of machines allow us to handle even the most challenging tasks, whether it is painting of big volumes of standard fasteners, TORX® recess special screws, long composite panel screws or Saddle Washers.

Aztec's production capacity, R&D programme based on our own know-how, together with precise internal quality control, assures a high quality level of our products and services.

Our customer service, guaranteed products' properties, short delivery times and the possibility of personalised products all contribute to Aztec's high standards.

Aztec International S.A. is a partner of Aztec Washer Co Inc., with headquarters in California, USA. The company was founded in 1968 by Henry DeGraan and since then Aztec Washer has been continuously setting the highest standards in the manufacture of Bonded Washers and EPDM/Silicone Flashings. Aztec Washer's market leading position and over 50 years of trading experience provide strong support to Aztec International's business.



Powder coating is a type of dry coating, which is applied as free-flowing dry powder. The coating adheres to the surfaces electrostatically and is then cured under heat to allow the powder to harden and create a compact surface protective layer. In comparison to conventional wet painting, powder coating allows to cover the element more thoroughly, leaving no unpainted spots.

## Why powder coating?

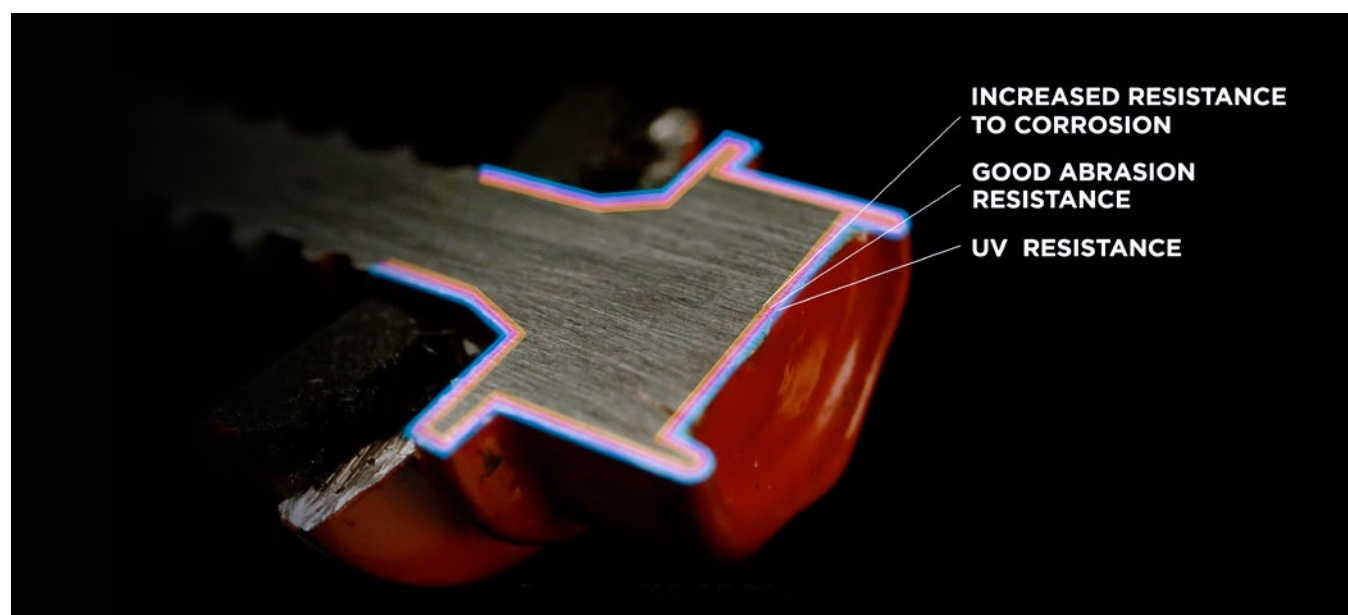
There are several advantages of powder coating over conventional solvent-based coatings:

- Apart from the decorative function, powder coating remarkably improves the corrosion resistance of a fixing, especially on carbon steel zinc plated surfaces
- Powder coating can produce much thicker layer than conventional wet painting, without running or sagging
- After hardening, the coating meets the requirements of colour fastness, gloss stability and UV resistance, as well as abrasion and impact resistance
- The hardened coating stays flexible and can even absorb significant expansion of the supporting surface, as well as its bending or twisting
- Powder coated surfaces generally have fewer appearance differences between horizontally coated surfaces and vertically coated surfaces, than surfaces painted with solvent-based paints
- Powder coating overspray can be recycled and thus it is possible to achieve nearly 100% use of the coating, which is much more efficient and more eco-friendly than traditional wet painting

## What can be powder coated?

Powder paint can be applied on different types of surfaces and materials with or without pre-treatment, such as carbon steel, stainless steel, aluminium and copper alloys. Quality control procedures during the painting process provide stable quality and thickness of paint layer, matching the needs of intended product application.

We are capable of coating various types of fasteners including: hexagonal, oval and low profile head screws, with different types of recess such as Phillips Truss, Pozidriv, Cross Head, Robertson drive, TORX®, TORX® ttap® and other six-lobe drives, rivets, nails, bolts, washers, saddle washers and many more.



### **Own machines and services**

Aztec International uses powder coating lines of its own design and construction that give flexibility in providing powder coating service even on most demanding projects.

Aztec offers a personalized and complex service for all customers, including but not limited to:

- Zinc plating and other anti-corrosion surface treatments applied by our trusted partners
- Internal design and printing of labels and logotypes for customers
- Special pretreatments to improve powder paint adhesion
- Powder coating of both small and large quantity orders
- Packing and labelling of the customer's products
- Packaging solutions and design
- Inhouse salt spray chamber tests
- Promo materials and technical back-up on powder coating
- Support in finding the right suppliers or producers of your own fasteners

Aztec provides wide range of unit carton boxes, plastic boxes, blisters and bags, what allows us to find the right solution for every market. Our experience gathered by years of cooperation with many global companies, as well as small players, taught us how to support every type of customer, no matter whether you are well established in the business or just starting your journey with powder coated products.

### **Structures and colours**

Master Coat® powder coating enables a perfect match between the fastener and the surface, including different levels of gloss, metallic effect and special paint structures. Aztec provides powder coating services in a wide range of colour standards such RAL, RR, NCS and British Standard, as well as customized paints which are mixed on request to match certain part of roof or façade. Our internal laboratory can match the finish and colour of the coating to materials provided by a customer (a piece of the roofing or façade sheet).



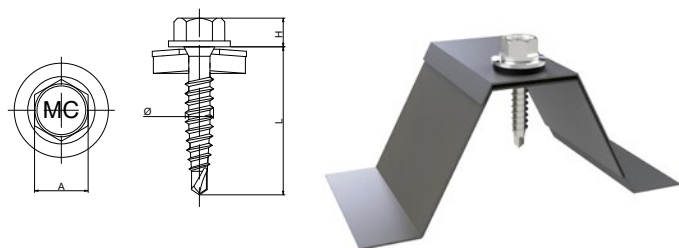




## CARBON STEEL FASTENERS

Aztec International offers different types of self-drilling and self-tapping carbon steel screws. The screws are made of 1022 low carbon steel and are case hardened by carburisation process. We offer fasteners with different types of head (e.g. hexagonal, truss, oval or pan head) with different types of recess like Phillips, T20, T25 and TORX® ttap®.

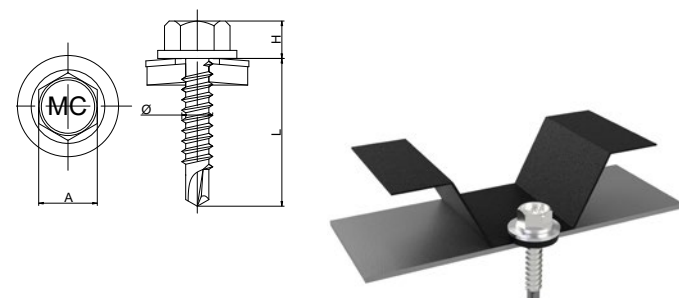
Carbon steel is a popular material for fasteners due to its good tensile strength and ability to bear loads. It can be heat treated easily modifying its mechanical properties. It is easy to machine and can meet the tight tolerances required in fastener construction. All of our fasteners are protected against corrosion. Available coatings are zinc or zinc-nickel.



### Hexagonal head self drilling stitcher screw with reduced drill point

#### GA2 - 4.8 x L

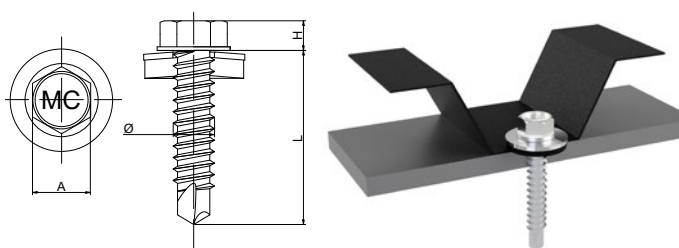
Ø [mm]	L [mm]	A [mm]	H [mm]	Drilling capacity [mm]	Washer Ø [mm]
4.8	20	8	5	1+1	14



### Hexagonal head self drilling screw with no. 3 drill point

#### GA3 - 4.8 x L

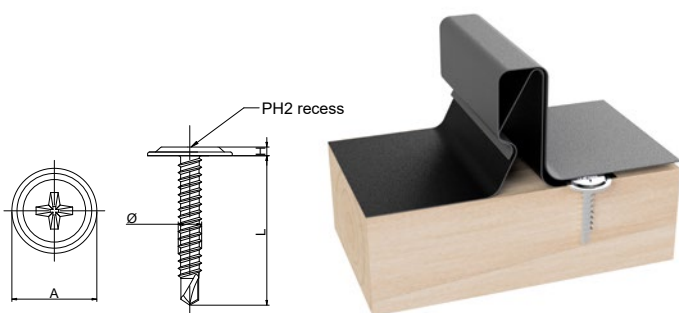
Ø [mm]	L [mm]	A [mm]	H [mm]	Drilling capacity [mm]	Washer Ø [mm]
4.8	19	8	5	1.5+1.5	14



### Hexagonal head self drilling screw with no. 3 drill point

#### GA5 - 5.5 x L

Ø [mm]	L [mm]	A [mm]	H [mm]	Drilling capacity [mm]	Washer Ø [mm]
5.5	25	8	5	< 5	16
5.5	75	8	5	< 5	16

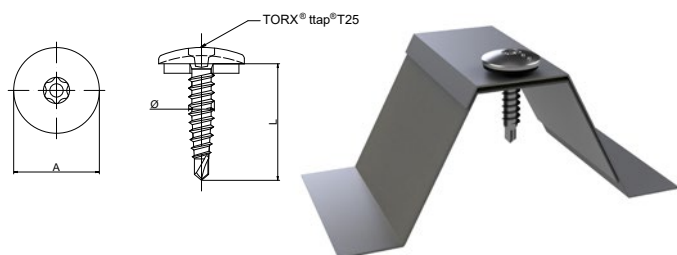


### Wafer head phillips self drilling screw

#### FH-GA3 - 4.2 x L

Ø [mm]	L [mm]	A [mm]	H [mm]	Drilling capacity [mm]	Washer Ø [mm]
4.2	16	11	2.3	1.5+1.5	-
4.2	25	11	2.3	1.5+1.5	-

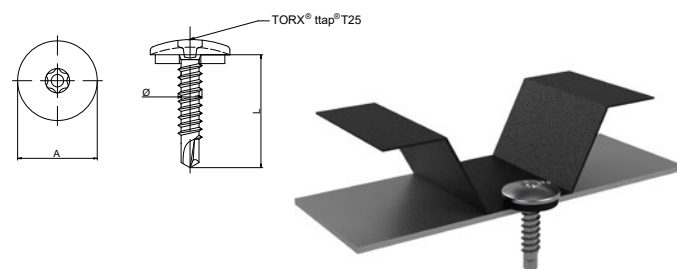
### Oval head TORX® ttap® self drilling stitcher screw with reduced drill point



#### GA2 - 4.8 x L OVAL

Ø [mm]	L [mm]	A [mm]	Drilling capacity [mm]	Washer Ø [mm]
4.8	20	14	1+1	10

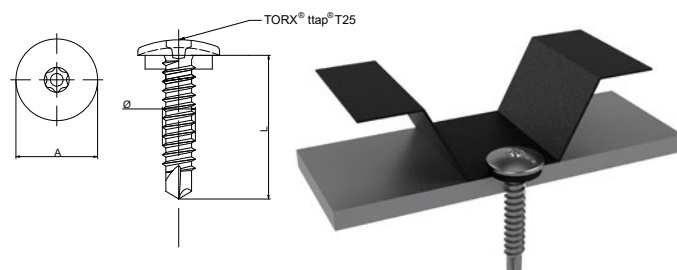
### Oval head TORX® ttap® self drilling screw with no. 3 drill point



#### GA3 - 4.8 x L OVAL

Ø [mm]	L [mm]	A [mm]	Drilling capacity [mm]	Washer Ø [mm]
4.8	19	14	1.5+1.5	10

### Oval head TORX® ttap® self drilling screw with no. 3 drill point

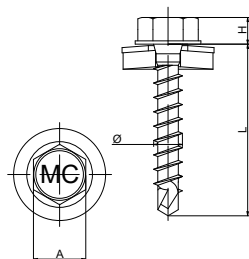


#### GA5 - 5.5 x L OVAL

Ø [mm]	L [mm]	A [mm]	Drilling capacity [mm]	Washer Ø [mm]
5.5	25	14	< 5	10

### Hexagonal head self drilling farmer screw with no. 2 reduced drill point

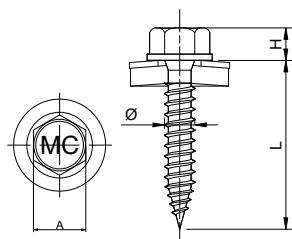
#### FS - 4.8 x L



Ø [mm]	L [mm]	A [mm]	H [mm]	Drilling capacity [mm]	Washer Ø [mm]
4.8	28	8	5	1.5	14
4.8	35	8	5	1.5	14
4.8	60	8	5	1.5	14
4.8	80	8	5	1.5	14

### Hexagonal head self tapping screw with sharp point

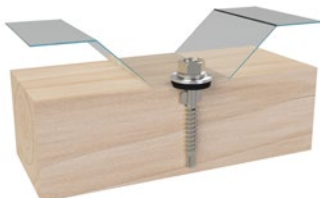
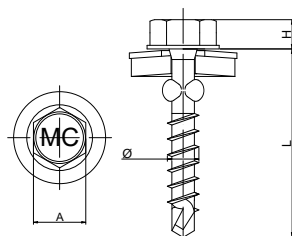
#### SP - 4.8 x L



Ø [mm]	L [mm]	A [mm]	H [mm]	Drilling capacity [mm]	Effective clamping thickness [mm]	Washer Ø [mm]
4.8	25	8	5	1	-	14
4.8	38	8	5	1	-	14
4.8	50	8	5	1	15	14
4.8	65	8	5	1	20	14
4.8	80	8	5	1	25	14
4.8	105	8	5	1	45	14

### Hexagonal head self drilling screw with wings

#### FS - 4.8 x L WING

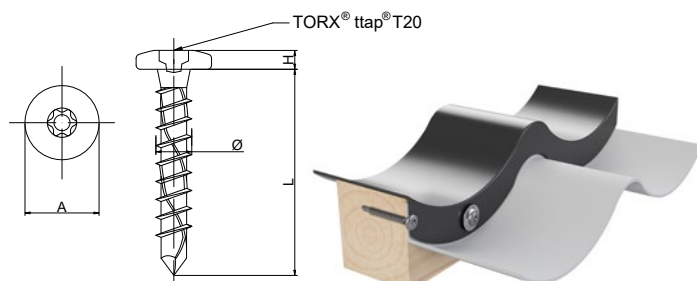


Ø [mm]	L [mm]	A [mm]	H [mm]	Drilling capacity [mm]	Washer Ø [mm]
4.8	35	8	5	1.5	16



### STR Pan head TORX® ttap® self drilling screw

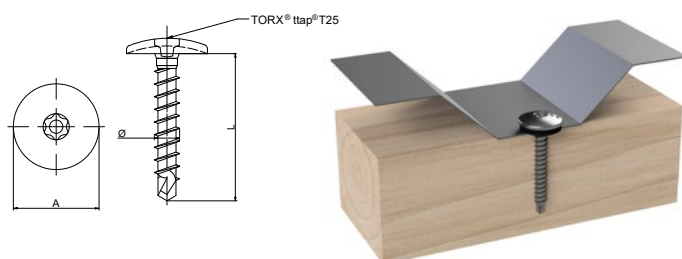
#### FS - 5.0 x L PAN



Ø [mm]	L [mm]	A [mm]	H [mm]	Drilling capacity [mm]	Washer Ø [mm]
5.0	20	9	2.5	1.5	-
5.0	25	9	2.5	1.5	-
5.0	35	9	2.5	1.5	-
5.0	65	9	2.5	1.5	-
5.0	80	9	2.5	1.5	-

### Oval head TORX® ttap® self drilling screw with no. 2 reduced drill point

#### FS - 4.8 x L OVAL



Ø [mm]	L [mm]	A [mm]	Drilling capacity [mm]	Washer Ø [mm]
4.8	28	14	1.5	10
4.8	35	14	1.5	10
4.8	60	14	1.5	10



**Master Coat®**

All screws can be ordered with or without powder coating  
Don't see the product you are looking for?  
Do you need a screw with a different type of head or washer?  
Please contact our Sales Department



## STAINLESS STEEL FASTENERS

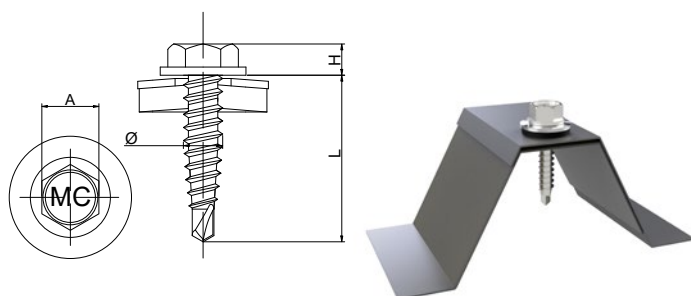
Our stainless fasteners are mostly made out of austenitic A2 (AISI 304) and A4 (AISI 316) steel grades. Resistance to corrosion, staining and low maintenance make stainless steel an ideal material for many applications where both the strength of steel and corrosion resistance are required.

Aztec International offers different types of stainless steel screws including low profile head screws specifically designed to be used on buildings' façades.

## SCREWS FOR FIXING METAL TO METAL

### Hexagonal head self drilling stitcher screw with reduced drill point

#### SS2 - 4.8 x L (SS410)

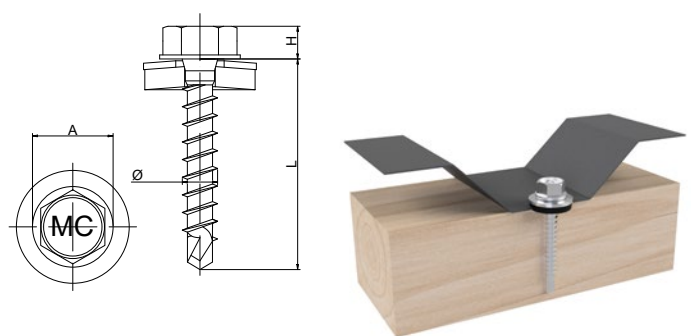


Ø [mm]	L [mm]	A [mm]	H [mm]	Drilling capacity [mm]	Washer Ø [mm]
4.8	20	8	4.5	1.5	14

## SCREWS FOR FIXING METAL TO TIMBER

### Hexagonal head self drilling farmer screw with reduced drill point

#### FS-SS - 4.8 x L (SS410)

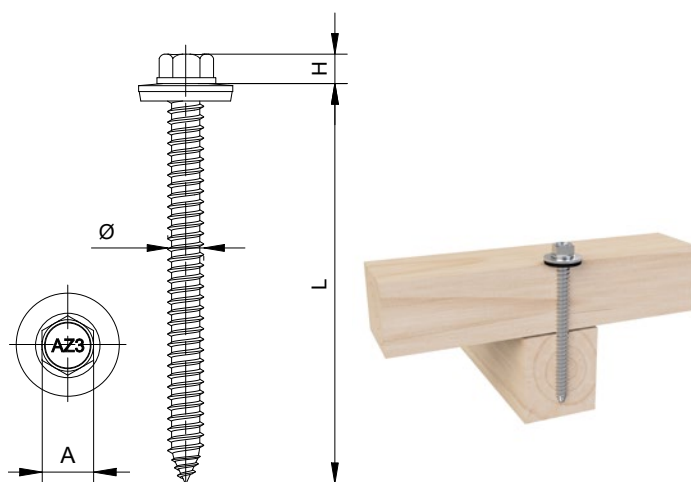


Ø [mm]	L [mm]	A [mm]	H [mm]	Drilling capacity [mm]	Washer Ø [mm]
4.8	35	8	5	1.5	14

## SCREWS FOR TIMBER

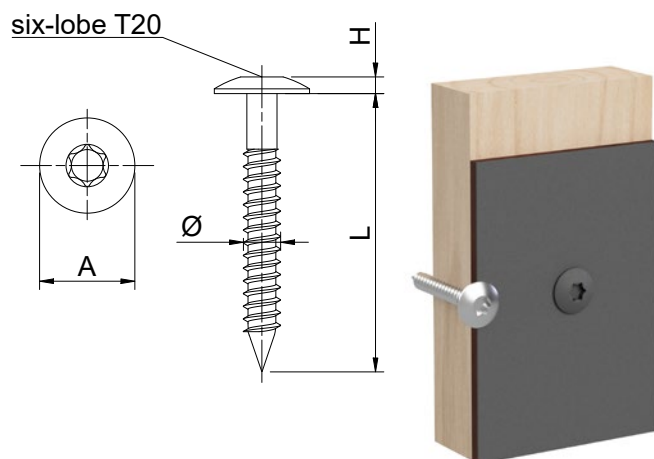
### Hexagonal head self tapping screw

#### STS TYPE A 6.5 x L (A2 / AISI 304)



Ø [mm]	L [mm]	A [mm]	H [mm]	Drilling capacity [mm]	Washer Ø [mm]
6.5	75	8	5	-	16
6.5	90	8	5	-	16
6.5	100	8	5	-	16

## Façade screw



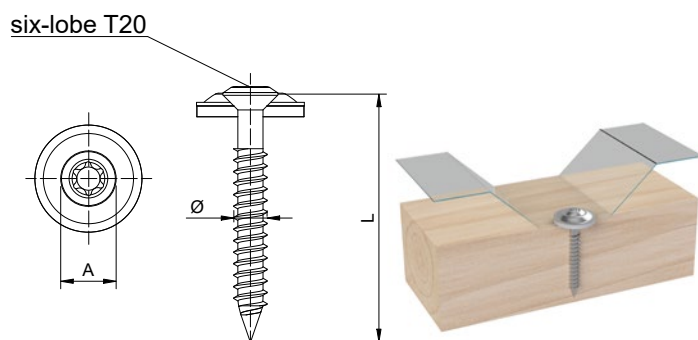
### Façade screw 4.8 x L (A2 / AISI 304)

Ø [mm]	L [mm]	A [mm]	H [mm]	Drilling capacity [mm]	Panel range [mm]	Washer Ø [mm]
4.8	25	12	2.6	-	6	-
4.8	32	12	2.6	-	8	-
4.8	38	12	2.6	-	9	-
4.8	50	12	2.6	-	20	-
4.8	60	12	2.6	-	30	-
4.8	70	12	2.6	-	40	-

### Façade screw 5.5 x L (A4 / AISI 316)

Ø [mm]	L [mm]	A [mm]	H [mm]	Drilling capacity [mm]	Panel range [mm]	Washer Ø [mm]
5.5	25	12	2.6	-	8	-
5.5	35	12	2.6	-	12	-

## Spengler oval head screw



### Spengler 4.5 x L (A2 / AISI 304)

Ø [mm]	L [mm]	A [mm]	Drilling capacity [mm]	Effective clamping thickness [mm]	Washer Ø [mm]
4.5	25	8	-	6	15
4.5	35	8	-	8	15
4.5	45	8	-	8	15/20
4.5	55	8	-	12	15/20
4.5	65	8	-	18	15
4.5	80	8	-	18	15
4.5	100	8	-	18	15





## BIMETAL FASTENERS

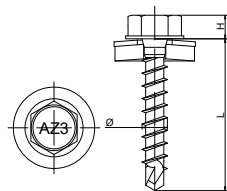
Our bimetal fasteners are comprised of two types of steel. The drill-point and the first few tapping threads of the screw are made out of either 1022 or 1035 carbon steel that is heat treated to guarantee exquisite drilling performance. The screw body including head section is formed from A2 stainless steel which is characterized by its excellent corrosion resistance.

The two metals are welded together and as a result they form a screw that has best of both worlds – great drilling capabilities and exceptional corrosion resistance. The screws are zinc-plated to protect carbon steel point from corrosion, making the screw visually undistinguishable from a standard zinc-plated carbon steel screw.

## SCREWS FOR FIXING METAL TO TIMBER

**Hexagonal head self drilling farmer screw  
with no.2 reduced drill point**
**FS-BI - 4.8 x L**

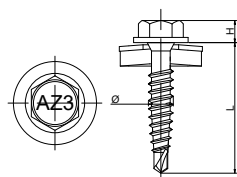
Ø [mm]	L [mm]	A [mm]	H [mm]	Drilling capacity [mm]	Washer Ø [mm]
4.8	35	8	5	1+1	14



## SCREWS FOR FIXING METAL TO METAL

**Hexagonal head self drilling stitcher screw  
with reduced drill point**
**BI2 - 4.8 x L**

Ø [mm]	L [mm]	A [mm]	H [mm]	Drilling capacity [mm]	Washer Ø [mm]
4.8	20	8	5	1+1	14



**Master  
Coat®**

All screws can be ordered with or without powder coating  
Don't see the product you are looking for?  
Do you need a screw with a different type of head or washer?  
Please contact our Sales Department



## MASTER TOOLS

Master Tools is the family of driver bits and sockets used in fastener installation.

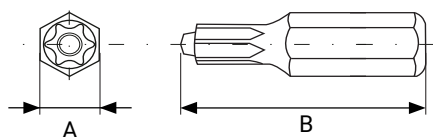
Spring clip design of the hex socket driver allows for a secure hold of the screw without a magnet attracting metal shavings that could damage the screw head's surface or its protective coating.

A TORX® ttap® bit's button tip matches the specially designed recess in the screw head providing improved stability during driving, which enables easy one-handed operations and does not require a magnetic holder.

Regular bits without a special tip are also available for driving façade screws offered by Aztec International and also for any Torx fastener with and without the TORX® ttap® special notch.

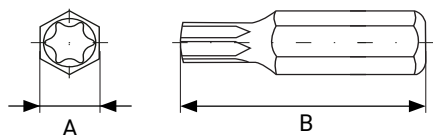
## Master Tools

### TORX® TTAP® BIT



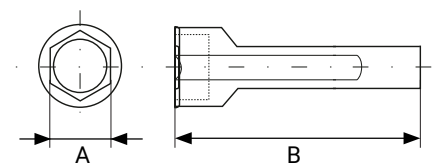
Type	Dimension	
	Lenght A	Lenght B
BIT T25	6.3	25
BIT T20	6.3	25

### SIX LOBE T20 BIT for Aztec spengler and façade screws

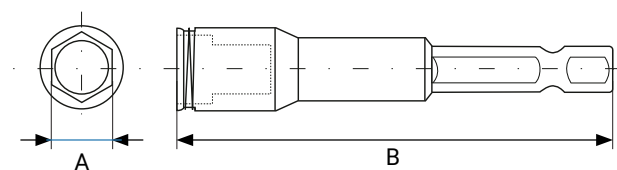


Type	Dimension	
	Lenght A	Lenght B
BIT T20	6.3	25

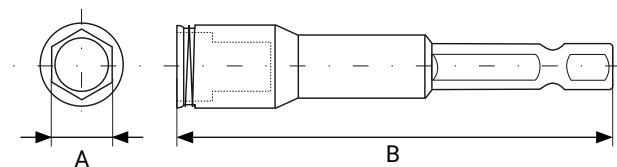
8 x 25



8 x 45



8 x 65



### SPRING CLIP SOCKET

Type	Dimension	
	Lenght A	Lenght B
8 mm Spring Clip Hex Head Screw Socket	8	25
8 mm Spring Clip Hex Head Screw Socket	8	45
8 mm Spring Clip Hex Head Screw Socket	8	65





## SADDLE WASHERS

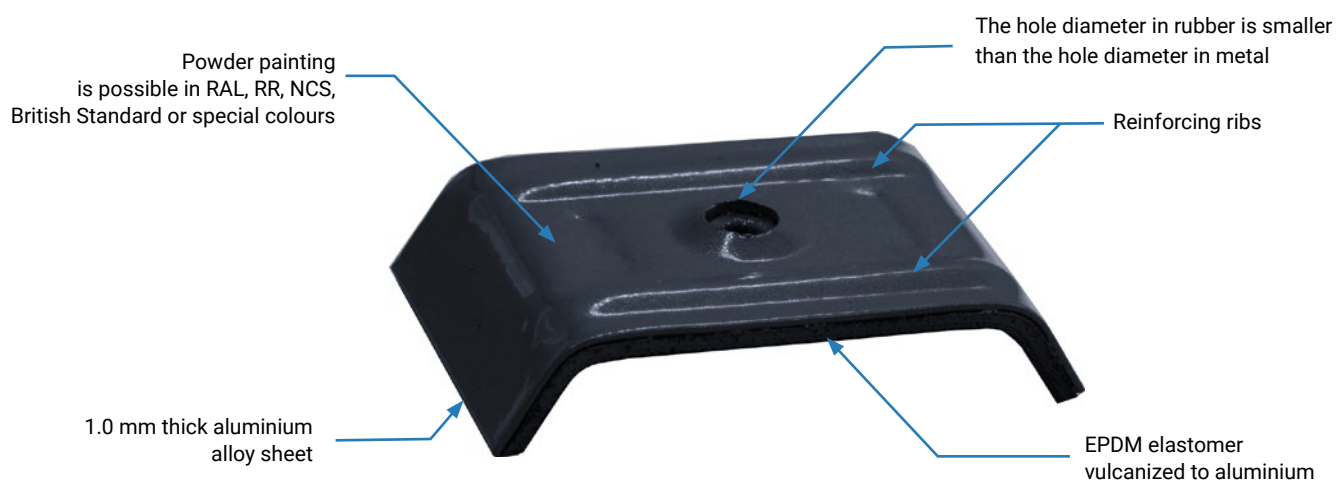
Saddle washers are a professional fastening solution designed to mount corrugated sheets and sandwich panels on both roofs and facades. Saddle washers produced by Aztec International are made out of 1mm thick aluminium sheet vulcanized with EPDM rubber.

This simple but unique construction provides strong and reliable fastening. Their shape fits the profile of the roofing sheet producing a long-lasting fixture able to withstand difficult weather conditions. Installing sandwich panels using saddle washers does not differ much from using normal farmer screws. Our saddle washers are not punched from pre-painted sheet therefore they can be painted in any colour after being made.

## Saddle Washers

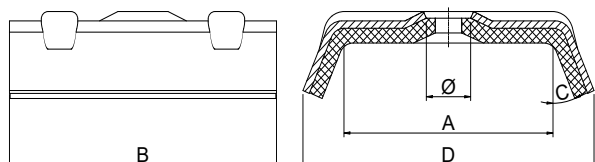
### SADDLE WASHERS PROVIDE A LOT OF BENEFITS:

- Greater contact area offers an improved resistance against forces caused by negative wind load
- Larger sealing area is less susceptible to failure and leaking
- Vulcanized EPDM rubber lasts longer and has no shape memory in comparison to rubber foam offered by competition
- A significant vibration damping resulting i.e. in noise reduction is also noticed
- EPDM does not react chemically with translucent sheets (PCV, PC, PMMA)



## Trapezoidal Saddle Washer

Trapezoidal saddle washers are usually used for crown fixing on roofs and sidings made of corrugated metal sheets.

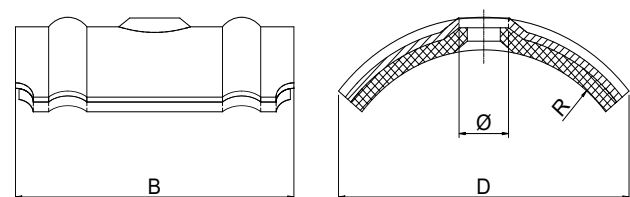


**Trapezoidal sheets Saddle Washer**

Type	A [mm]	B [mm]	C [°]	D [mm]	Ø [mm]
SW 23-30	22.5-23.5	38-39	27-33	36-37	6.5-7.5
SW 25-27	23.5-24.5	38-39	27-33	37-38	6.5-7.5
SW 26-15	23.5-24.5	38-39	11-19	34-35	6.5-7.5
SW 26-27	25.5-26.5	38-39	23-31	38-39	6.5-7.5
SW 26-49	26-27	38-39	46-54	41-43	6.5-7.5
SW 30-23	30-31	38-39	20-26	42-43	6.5-7.5
SW 32-25	26.5-27.5	38-39	23-31	40-41	6.5-7.5
SW 34-23	33.5-34.5	38-39	20-28	46-47	6.5-7.5
SW 41-32	40.5-41.5	38-39	24-39	56-57	6.5-7.5
SW 55-32	51-52	41-42	38-36	68-69	6.5-7.5

## Sinusoidal Saddle Washer

Sinusoidal saddle washers are usually used for crown fixing on roofs and sidings made of corrugated polycarbonate, PCV or acrylic sheets.



**Sinusoidal sheets Saddle Washer**

Type	B [mm]	D [mm]	Ø [mm]	R [mm]
SW 25	38 - 39	37 - 39	6.5 - 7.5	24 - 26

Saddle washer size should fit to the profile of the roof covering. You can contact our Sales Department for help with matching the correct saddle washer size for your metal sheet.



A close-up photograph of numerous rivets of different sizes and colors (including silver, gold, and blue) scattered across a dark, reflective surface. The rivets are oriented in various directions, some showing their shafts and others showing their heads. The lighting creates highlights on the metallic surfaces and reflections on the dark background.

## RIVETS

Rivets are a mechanical fastening solution used to clamp together multiple sheets of any material, including but not limited to metal, plastic, and leather. Rivets consist of a shaft and a mandrel.

After a shaft is inserted into a pre-drilled hole the rivet mandrel is pulled back by the tool and forms the closing head. Clamping effectiveness depends on the diameter and the length of the rivet shaft.

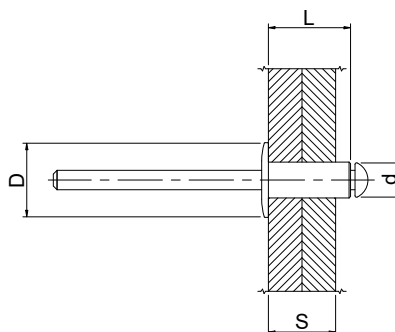
## Rivets

**AZTEC INTERNATIONAL OFFERS POWDER COATING ON RIVETS  
AVAILABLE IN TWO SYSTEMS:**

- The first system is realized by coating pre-assembled rivets which results in creating a powder coating layer on the rivet's flange and mandrel



- The second method consists of powder coating only the rivet's flange on the rivet's body and then assembling it with a mandrel on our rivet assembling lines. This option yields rivets where only the flange is painted



	Body diameter min d [mm]	Body diameter max d [mm]	Length L [mm]	Flange diameter D [mm]	Grip range S [mm]
BR-O\AL\SS\4.0X10.0	3.85	4.08	10	8.4	4 - 6.5
BR-O\AL\SS\4.0X12.0	3.85	4.08	12	8.4	6 - 8.5
BR-O\AL\SS\5.0X14X14	4.65	4.88	14	14	8 - 10
BR-O\AL\SS\5.0X18X14	4.65	4.88	18	14	10 - 14
BR-O\AL\ST\4.8X12	4.65	4.88	12	10	6 - 8



**Master  
Coat®**


**All rivets can be ordered with or without powder coating**

**Don't see the product you are looking for?**

**Do you need a different type, size or material?**

**Please contact our Sales Department**



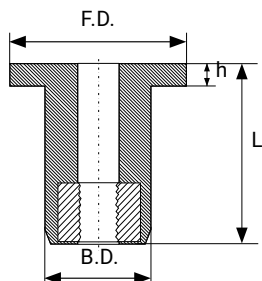


## RUBBER PLUG

The Rubber Plug system consists of a rubber nut insert and stainless steel bolt, that is assembled with a stainless steel Master Seal® washer. Excellent for fixing various materials. Rubber Plug cushions and seals similar and dissimilar materials, insulating against electrical and static surges.

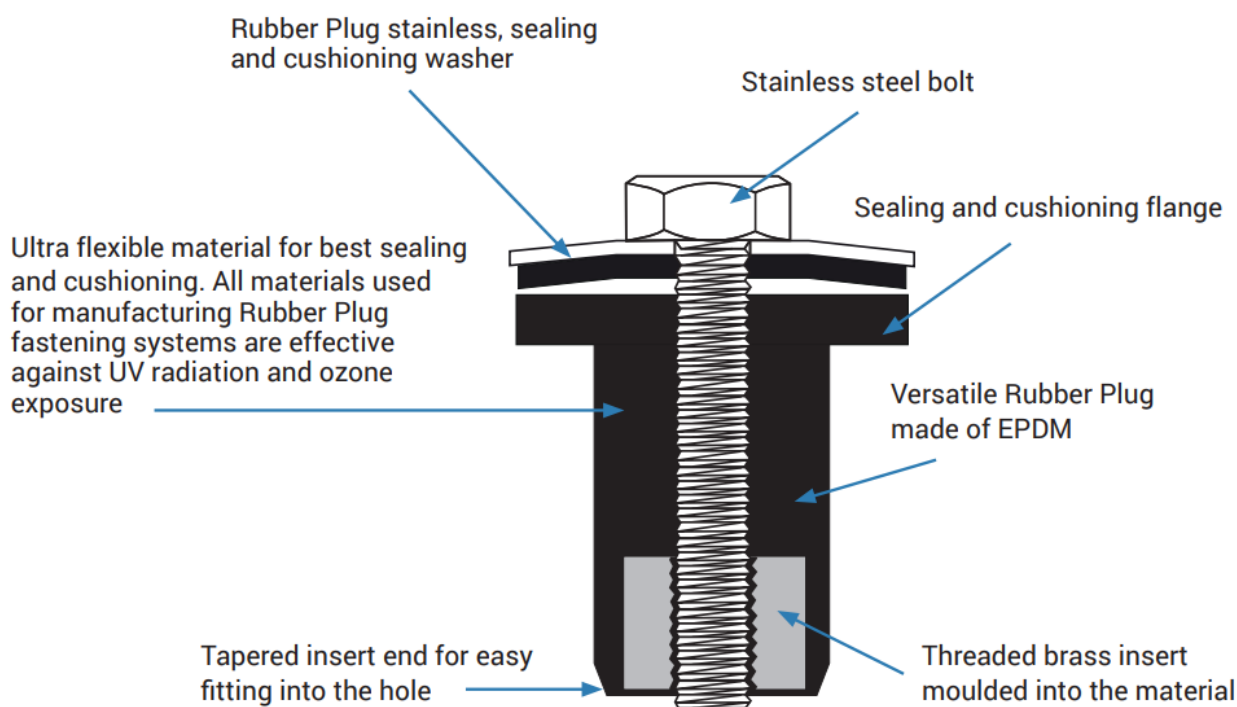
It also dampens vibrations and vastly improves corrosion resistance at the place of fixing. Removable and reinsertable, its wide range covers all standard screw dimensions.

## Rubber Plug



Type	S	F	S
Body diameter B.D. [mm]	9.6		16
Overall body length L [mm]	17	21.5	21
Outside flange diameter F.D. [mm]	14	14	25
Flange thickness h [mm]	1	1	2.8

Available in other lengths. For further information, please contact our Sales Department.







## MASTER SEAL® - BONDED WASHER

Aztec's unique vulcanizing technology bonds together strong backing materials and flexible facing materials. Aztec offers a wide range of washers with black conductive EPDM or grey non-conductive EPDM. Washer's dimensions, EPDM compound, as well as its hardness, can be adjusted to meet requirements of non-standard projects.

## Master Seal® - Bonded Washer

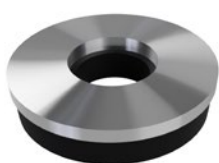
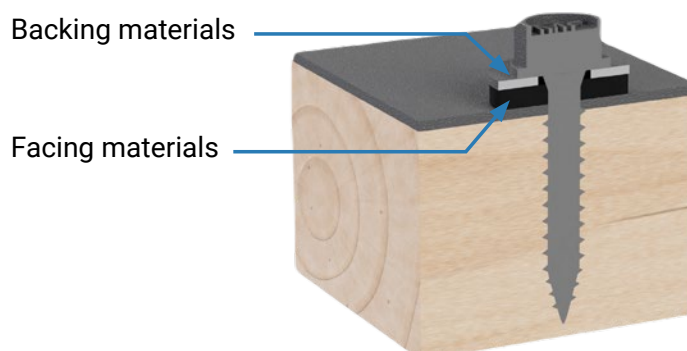
### Facing materials:

EPDM is an excellent ozone and weathering resistant elastomer. It is highly effective when applications require extreme temperature resistance. EPDM is appropriate for construction application where primary environmental issues are ozone, UV radiation and high temperatures. EPDM is available in black or grey and in various thicknesses.

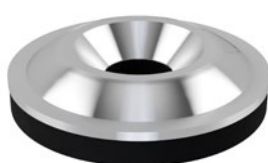
Silicone elastomer is appropriate for applications with requirements for high temperature or chemical resistance.

### Backing materials:

- Galvanized steel
- Aluminium
- Stainless steel



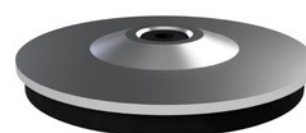
Bonded washer



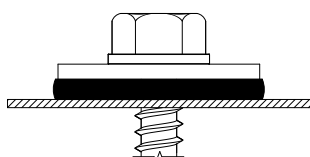
M washer



Rubber washer

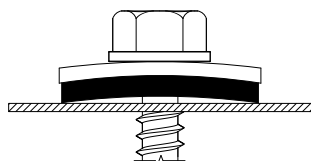


Cone washer



#### CORRECT INSTALLATION

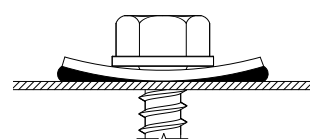
After the screw is installed, the washer should adhere evenly to the surface to ensure tight sealing on the surface and around the screw



#### INCORRECT INSTALLATION

##### Screw under-tightened

If the screw is under-tightened, there will be no tight seal between the washer and the surface

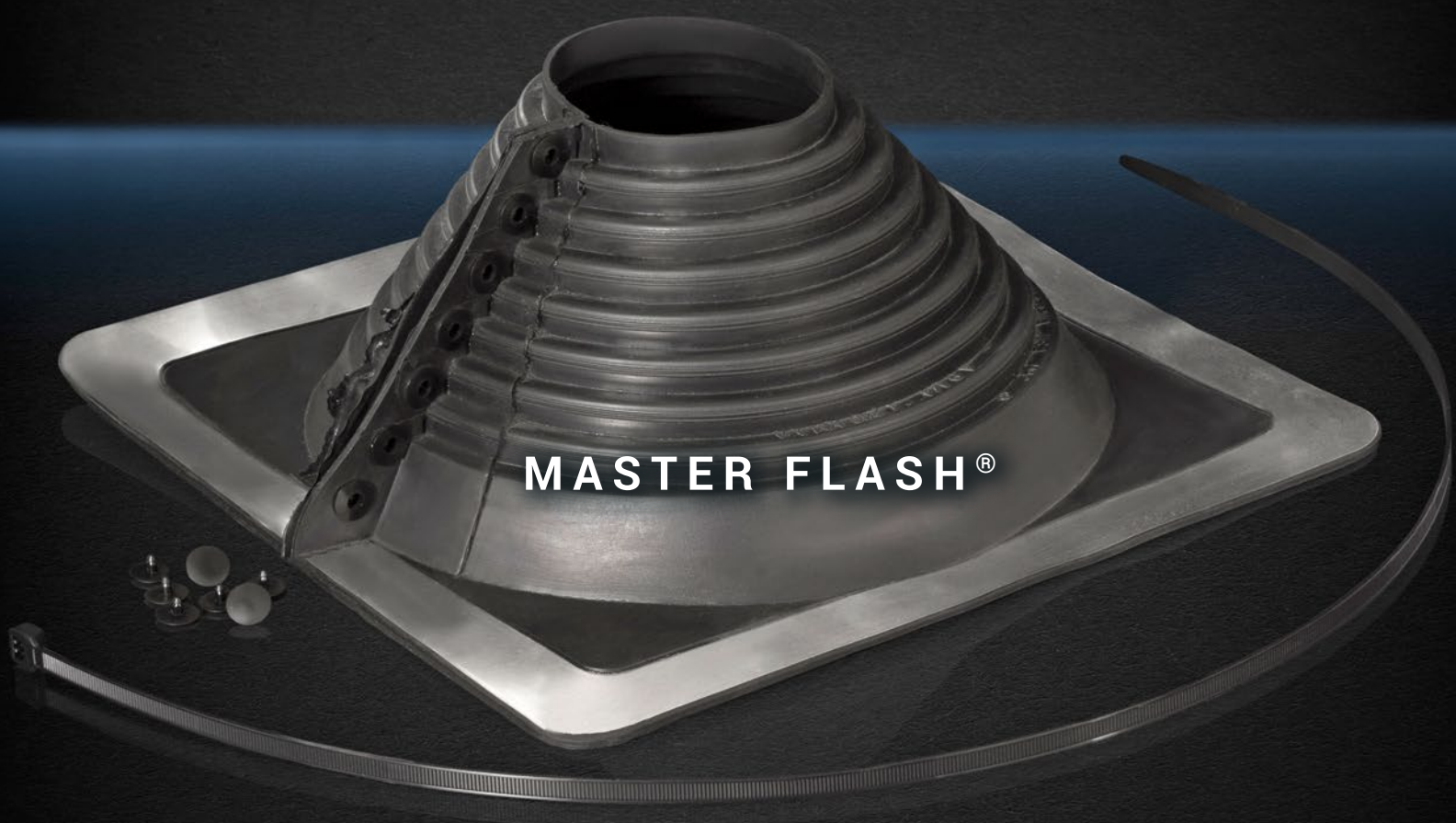


#### INCORRECT INSTALLATION

##### Screw over-tightened

Over-tightening the screw may damage the sealing material and lead to leakage





Master Flash® products guarantee watertight sealing around external pipes. Made of EPDM material, all flashings are high temperature and UV resistant with a high tensile strength. Flashings made of silicone can withstand even temperatures above 250 °C. Engineered for profiled roofing materials, Master Flash® is easy to customise on site to accommodate a wide range of pipe and vent diameters.

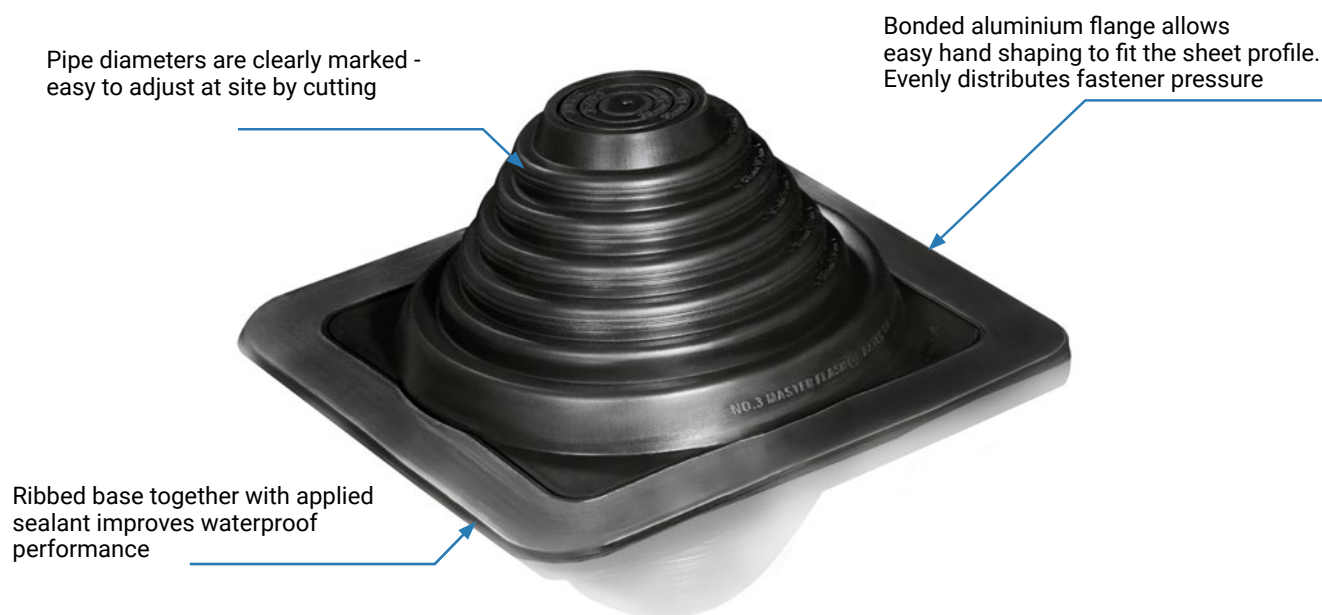


## Master Flash®

Our broad Master Flash® product range also includes sealing solutions for other roofing types than corrugated metal sheets, such as ceramic, cement or slate tiles, membranes and plastic.

### AZTEC OFFERS FLASHINGS:

- made of EPDM (Ethylene Propylene Diene Monomer) or Silicone
- for industrial and residential buildings
- available with square and round bases
- for solar panel applications
- for heating, ventilation and air-conditioning industry
- for square tubing
- in a wide range of EPDM colours (on special request)
- with 20 years manufacturer warranty (or 35 years on special request)



Master Flash®		EPDM 500	SILICONE
ADVANCED OZONE RESISTANCE		70 h @ 500 pphm	70 h @ 500 pphm
HIGH TEMPERATURE RESISTANCE			
Tested to:	intermittent	+135 °C (+275 °F)	+260 °C (+500 °F)
	continuous	+100 °C (+212 °F)	+225 °C (+437 °F)
LOW TEMPERATURE RESISTANCE tested to:		-55 °C (-67 °F)	-74 °C (-100 °F)
TENSILE SET maximum		10 MPa (1450 psi)	5 MPa (700 psi)
COMPRESSION SET maximum		25%	50%

Master Flash® products may also be ordered as a set, including sealant and fasteners.



**Aztec International S.A.**

ul. Sowia 13 C 62-080 Tarnowo Podgórne, Poland  
tel: (+48) 61 867 60 84, fax: (+48) 61 867 34 44  
e-mail: [sales@aztec-international.eu](mailto:sales@aztec-international.eu)  
[www.aztec-international.eu](http://www.aztec-international.eu)

Other European affiliate:

**Aztec (UK) Ltd.**

Unit 55, Enterprise Trading Estate  
Hurst Lane, Pedmore Road, Brierley Hill  
West Midlands DY5 1TX, United Kingdom  
tel: (+44) 1384 573444  
e-mail: [sales@aztecmaster-flash.co.uk](mailto:sales@aztecmaster-flash.co.uk)  
[www.aztecmaster-flash.co.uk](http://www.aztecmaster-flash.co.uk)

In cooperation with:

**Aztec Washer Company, Inc.**

13821 Danielson Street Poway,  
CA 92064 1-800-WASHER 5 (Outside Calif.), USA  
tel: 1-858-513-4305, fax: 1-858-513-4305  
[www.aztecwasher.com](http://www.aztecwasher.com)

**Aztec Nordic Ltd Oy Ab**

Gropintie 6  
FI-10600 Tammissaari  
FINLAND  
Tel. +358 40 849 7781

MASTER FLASH® IS REGISTERED TRADEMARK OF AZTEC INTERNATIONAL S.A.,  
MASTER COAT® IS REGISTERED TRADEMARK OF AZTEC NORDIC LTD.,  
MASTER SEAL® IS A REGISTERED TRADEMARK OF AZTEC WASHER COMPANY, INC.,  
TORX® IS A REGISTERED TRADEMARK OF CAMCAR INNOVATIONS.  
TTAP® IS A REGISTERED TRADEMARK OF TTAPDRIVE AS.  
© 2023 AZTEC INTERNATIONAL S.A., VERSION 1.0