



**Aztec  
International.**

# **Product Catalogue.**

**Roof flashings.  
Saddle washers.  
Powder coating.  
Screws.**

**Safety starts  
with the right products.**



## Master Flash®

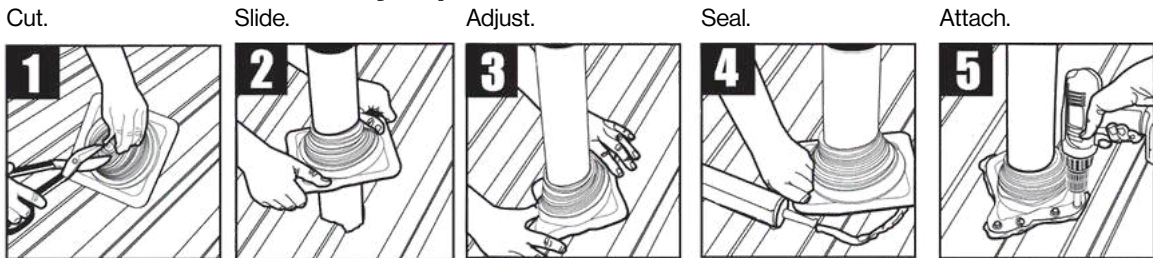
The Master Flash® product series is a proven solution for sealing all types of elements that protrude from buildings, such as pipes, cables, chimneys, and ventilation ducts.

### Characteristics of Master Flash® series products:

- Made of EPDM or silicone – materials resistant to low and high temperatures
- Available in a wide range of variants and sizes that can be tailored to individual needs
- Resistant to weather conditions such as precipitation, UV radiation, and ozone exposure
- Installation possible in as little as 5 minutes – no specialized equipment required to fit the product
- Manufacturer's warranty of up to 35 years



### How to install Master Flash® in 5 easy steps:



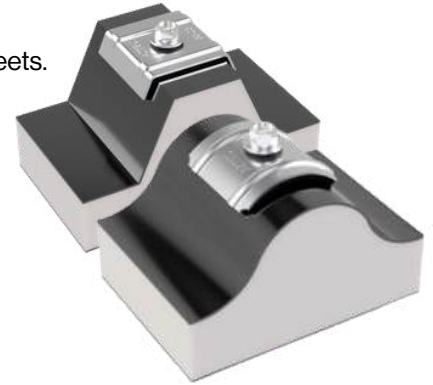
[master-flash.eu](http://master-flash.eu)

**Learn  
more**



## Saddle washers — full range of products

For professional installation of corrugated sheets, sandwich panels, and trapezoidal sheets.



### Advantages of our saddle washers:

- Shape adapted to the geometry of the material
- Bigger downforce area
- EPDM does not react chemically with translucent panels

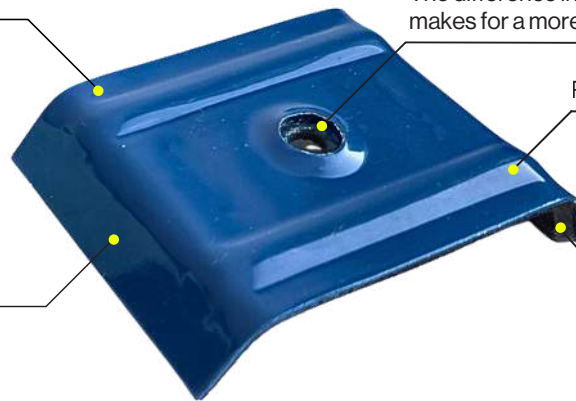
Powder coating available in the RAL and NCS color palettes or in special colors.

The difference in the holes of rubber and metal makes for a more secure sealing.

Reinforcing ribs.

1.0 mm thick aluminum alloy sheet metal.

A thick layer of EPDM across the entire surface ensures better damping of vibrations and noise.



## Master Coat® — powder coating

We carry out the painting process on our own production lines, which are built using machines designed by us. This allows us to maintain full control over every stage of the technological process. This enables us to undertake projects for customers seeking premium services that require high precision and a bespoke approach.

We specialise in painting fasteners such as screws, washers, caps, nails and rivets, as well as other metal components. As well as large-scale painting, we also carry out small-scale projects, flexibly adjusting the process parameters to meet the specific technical and visual requirements of each one.



**Master  
Coat®**

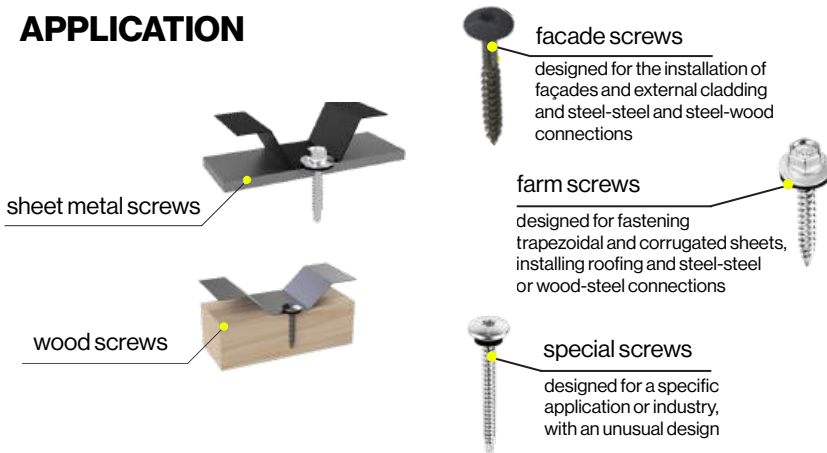
### Comparison of the advantages of powder coating and traditional solvent-based coatings

| Area of comparison                 | Powder coating  | Traditional solvent-based coatings                               |
|------------------------------------|---|--|
| <b>Protective function</b>         | Significantly increases corrosion protection, especially on galvanised carbon steel screws          | Provides mainly a visual effect; corrosion protection is limited |
| <b>Coating thickness</b>           | Enables a thicker, even layer without streaks or drips  | Thinner layer, with greater thickness, water stains may occur    |
| <b>Colour and shine durability</b> | After curing, the coating retains its colour and gloss stability, even when exposed to UV radiation | Colour and shine may change over time due to external conditions |
| <b>Mechanical resistance</b>       | Good resistance to abrasion, impact and mechanical damage   | Lower resistance to abrasion and mechanical damage               |
| <b>Material efficiency</b>         | Excess powder can be recovered and reused, allowing for almost 100% utilisation of the material     | Excess paint is not suitable for reuse                           |
| <b>Environmental aspect</b>        | A more environmentally friendly process - no solvents and less material waste                       | Contains solvents and generates greater material losses          |

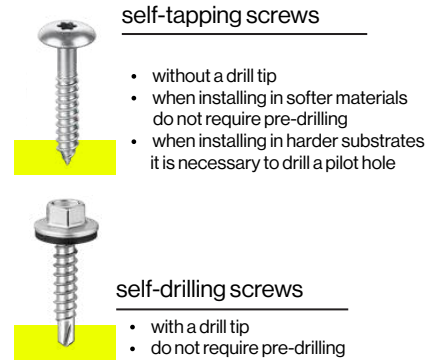


## Screws

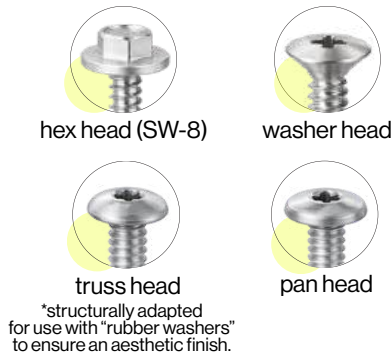
### APPLICATION



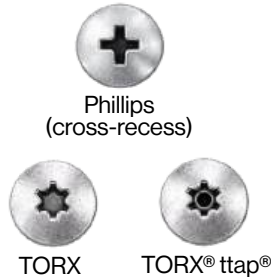
### INSTALLATION



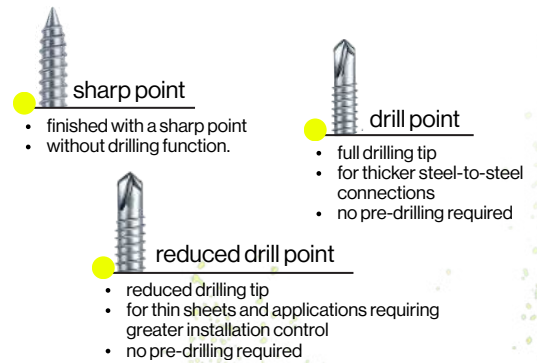
### HEAD TYPES



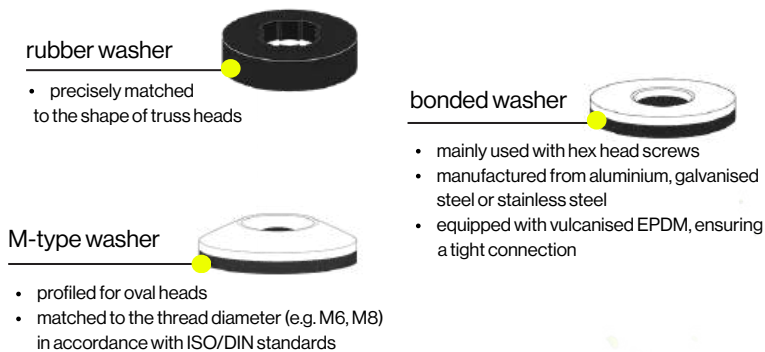
### DRIVE TYPES



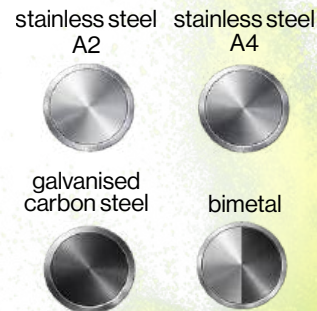
### TIP TYPES



### WASHER TYPES



### MATERIAL



# Safety starts small.



#### Aztec International S.A.

Sowia 13 C, 62-080 Tarnowo Podgórze, Poland  
tel: (+48) 61 867 60 85  
e-mail: export@aztec-international.eu  
aztec-international.eu